

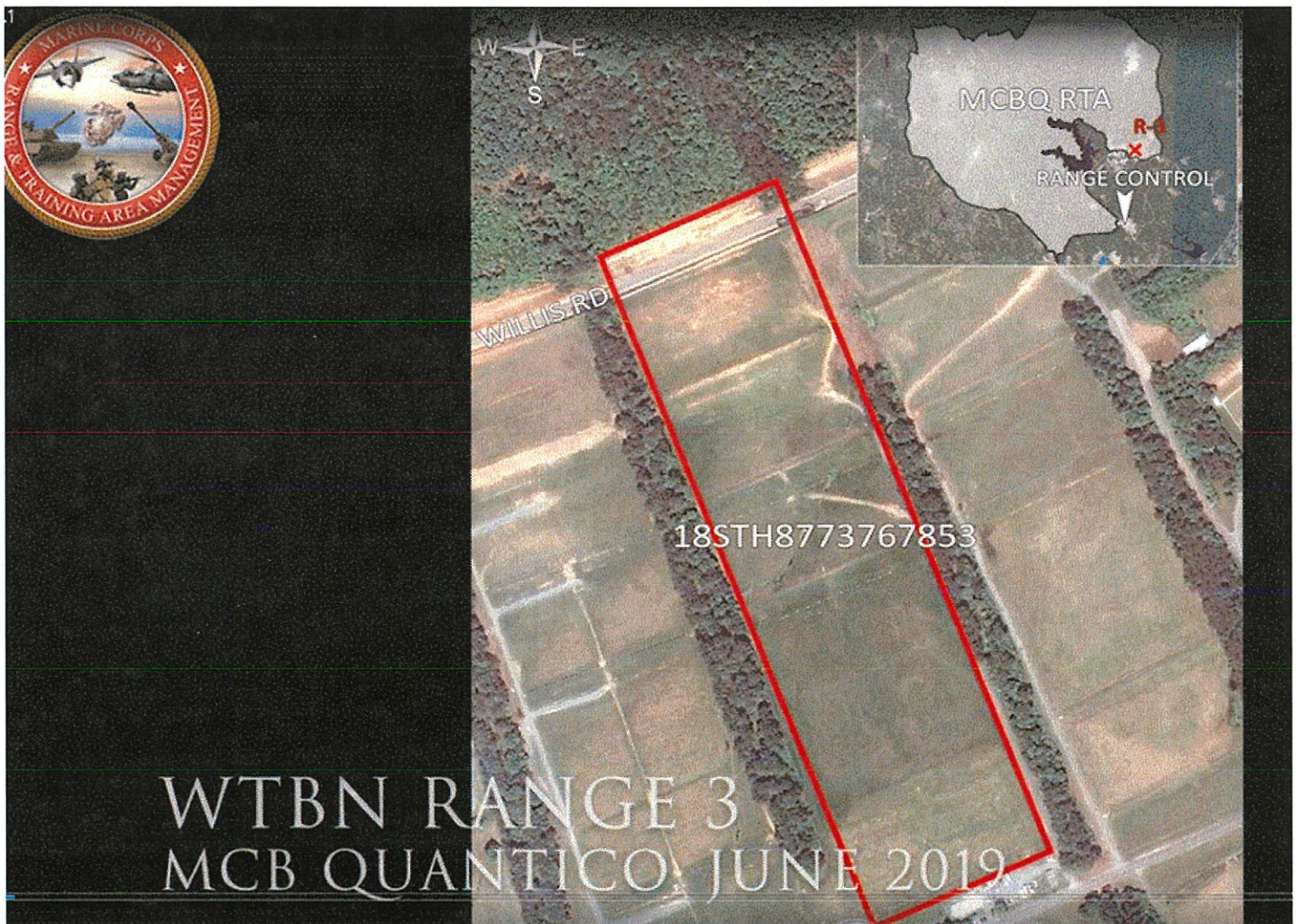
WTBN RANGE 3 SOP

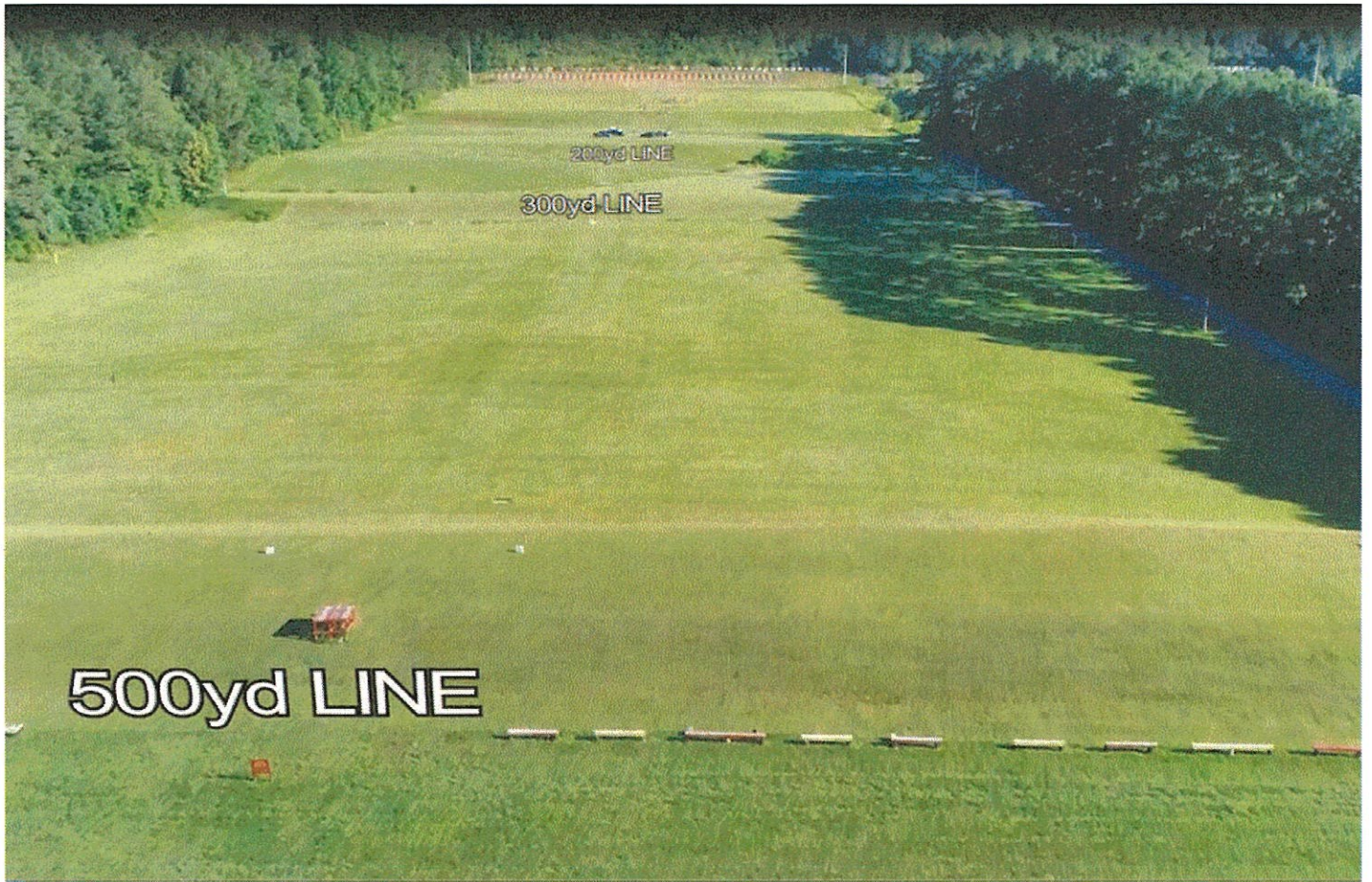
RANGE DESCRIPTION

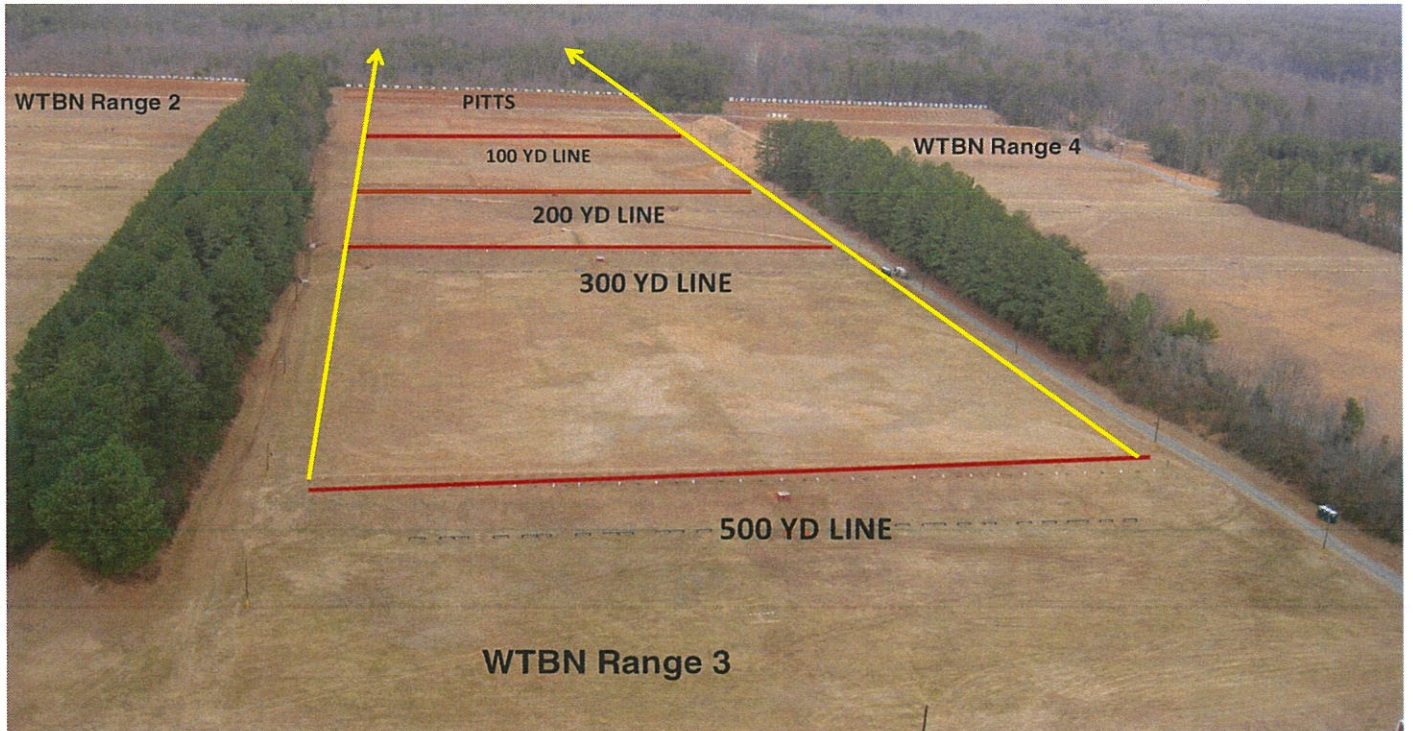
Range 3 is an active, small arms, live-fire known distance range located at Grid 87786770. It is accessible from MCB-4. Range 3 has 50 firing points and firing distances from 15 to 600 yards.

Primary Use: The primary purpose is the execution of the Marine Corps Combat Marksmanship Program and Entry Level Marksmanship Training for TBS students and Annual Rifle Training for personnel assigned to the National Capital Region.

DOWN RANGE MOVEMENT INTO THE IMPACT AREA (BEYOND THE IMPACT BERM) IS PROHIBITED







GENERAL RANGE INFORMATION:

Number of Firing Points: 50

WEAPONS ACCOMMODATED

- Service shotguns
- Service pistols
- Service rifles
- Approved sniper, competition and special application rifles up to .338
- Approved Foreign Weapons
- Pyrotechnics and illumination are authorized when fire conditions allow
- Light and medium machine guns
- Approved hand-held grenade launchers
- Approved R & D weapons
- Approved automatic rifles

AMMUNITION AUTHORIZED

- Shotgun (All)
- Pistol (All)
- 5.56mm Ball/Link
- 7.62mm X 51mm Ball/Link
- 7.62mm X 51mm Special Ball (.308)
- 7.62mm X 67mm (.300 WinMag)
- 8.58mm X 70mm (.338 LaPua Mag)
- 12.7mm X 99mm (.50 cal BMG ball)
- Approved foreign ammunition
- 40mm Grenade Illum and smoke
- Approved rifle team competition ammunition

TARGETS/SIMULATORS/DEVICES. Targets on Range 3 will be placed in the target carriages for KD firing. For short range shooting the targets will be placed on line with the 100 yard firing line. Targets will be placed to ensure projectiles do not impact the protective berm and all impacts land between targets 1 and 50.

- Targets are limited to paper, wood, plastic and approved ballistic steel.
- Ballistic steel targets must be a minimum of 3/8" and constructed of AR-500 or greater steel.
- Steel targets will not be engaged closer than 100m with 5.56mm or 7.62mm for targets provided by unit.
- No EPR ammunition will be fired on steel targets.

Contact Training Support Center (TSC) at (703)432-7026/7969 for targetry support or questions.

Minimum engagement distances for portable ballistic steel targets:

- Pistol: 7 meters
- Shotgun (buck/bird): 10 meters
- Shotgun (slug): 50 meters
- 5.56mm/.223 Ball/link: 150 meters for TSC targets
100 meters for unit-owned targets

-7.62mm Ball/linked: 150 meters for TSC targets
100 meters for unit-owned targets

-7.62mm Special Ball: 150 meters

-.300 WinMag Ball: 300 meters

**No .50 cal or .338 on steel targets

-Approved foreign weapons ammunition

-Pistol: 7 meters

-5.45mm: 150 meters for TSC targets
100 meters for unit-owned targets

-7.62mm Ball and linked: 150 meters for TSC targets
100 meters for unit-owned targets

-7.62mm x 54R: 150 meters for TSC targets
100 meters for unit-owned targets

RANGE USE RESTRICTIONS/COMMENTS.

1. MCB Quantico Range regulations, Range SOPs, and WTBN SOP will be strictly adhered to.
2. Using unit will check-in with WTBN S-3 and receive range brief prior to occupying the range.
3. Red range flags will be placed on the pit poles next to target 1 and 50 and on the poles on either side of the firing lines being used. For night shooting a red strobe will be activated.
4. The only weapons and ammunition approved for use on this range are listed in this document. There shall be no deviations from or modification to the approved weapons and ammunition.
5. For WTBN units/sections: The OIC and RSO will be physically present on the range at all times during live fire training and events. For multiple ranges/events in one unit/section, only one OIC is required, but must be physically located on one of the ranges (SAT Range excluded).
6. For external units: The OIC and RSO will be physically present on each range at all times during live fire training and events. For multiple ranges/events with external units, an OIC and RSO is required for each range, and must be physically located on each of those ranges.
7. The Officer-in-Charge (OIC) shall be the rank of Staff Sergeant or above and will be certified in accordance with MCB Range Regulations. The Range Safety Officer (RSO) shall be the rank of Sergeant or above and will be qualified in accordance with MCB Range Regulations.
8. Strict inter-range and intra-range coordination and communication will be exercised to ensure personnel are not exposed to direct weapons fire or ricochet hazards.

9. Personnel on Range 3 cannot be forward of any targets on Ranges 2 or 4.
10. Personnel on Range 2 and Range 4 cannot be forward of any targets on Range 3.
11. Movement between firing lines must be coordinated with WTBn S-3 via radio communication.
12. Adjacent ranges present hazards when firing. Personnel will not occupy any portion of the SDZs unless they are protected by artificial barriers. Any personnel located in the pits will remain on the catwalk during firing.
13. Personnel will only enter the pits when authorized by the RSO and WTBn S-3. The pit entrance is located at the 100 yard line on the right side of the range. Personnel will be instructed to make a left turn when exiting the tunnel. Range personnel will ensure the barrier and sign are posted after the last person enters the tunnel to ensure no one enters back into a hot range.
14. Fire and Movement or Fire and Maneuver are not authorized. The only exception is firing on the move to support the execution of the Marine Corps Combat Marksmanship Program Tables 2-6 short range engagements.
15. Procedures for firing on the move:
 - Movement will be restricted to walking straight forward, to the rear and simple button-hook techniques.
(No fire team/individual rushes)
 - There will be no more than two shooters per instructor/safety supervisor moving at a time. (Example: 7 shooters = 4 instructor/safety supervisors).
 - There will be at least one target width separation between shooters.
 - Shooters will not fire at multiple targets closer than 15 meters.
 - Multiple targets will not be farther apart than one meter.
 - Targets will be no farther than 50m.
 - Targets will be constructed from paper, plastic, wood or ballistic steel. No steel targets engaged with 5.56mm/7.62mm closer than 100m.
 - Shooters will fire at no more than two targets at a time while firing on the move.
 - Semi-Automatic firing only as prescribed in MCCMP Tables 2-6.
16. Approved steel targets are authorized with the following restrictions:

- a. All targets must be placed between the 100-300 yard lines.
 - b. Personnel on adjacent ranges must be physically up-range of the location of the steel targets.
 - c. Adhere to minimum engagement distances.
17. When recreational fire is being conducted, only weapons with a distance x (maximum range) of 6500m (.50cal ball) or less will be fired.
18. When recreational fire, rifle team training or competition matches are being conducted, and specialized calibers below .50 cal are being used, a .50 cal ball SDZ (Dist X 6500m) will be utilized. If .338 ammunition is to be used, that SDZ (Dist X 6,833m) will be utilized for only the time that the individual weapon(s) is being fired. **These "heavy calibers will be fired from the 500-600 yard lines only.**
19. Scout Sniper Glass shoots are authorized on Range 3. Static glass targets will be placed between the 100 and 200 yard lines.
20. Glass targets are authorized with the following restrictions:
- a. All glass fragments/spalling will be completely removed from the range upon completion of training. This can be done by utilizing drop cloths/sheets.
 - b. For angled glass shots, the target will be positioned so that the gun-target line (the shot) is oriented straight down range.
 - c. Glass targets will be treated as steel targets in accordance with this SOP and SOUM 2-02, however, glass is authorized for .338 cal ball and below ammunition.
21. Automatic fire is authorized for 6-9 round bursts only.
22. The Interservice Opening Shot (Det cord) is authorized on Range 3.
23. Units that have requested contractor support (i.e., automated targets, PITS targets, battlefield effects simulators, etc.) that are not present on the specified range within 1 hour of the requested time and have not contacted RMB/TSCQ will forfeit all contracted support for the day.
24. Units that have occupied a range with approved contractor support (i.e., automated targets, PITS targets, battlefield effects simulators, etc.) and that have not begun to use that support within 2 hours of the requested hour of operation will forfeit all contracted support for the day.
25. Units that are training with contractor support (i.e., automated targets, PITS targets, battlefield effects simulators, etc.) that place

themselves voluntary into check fire for 2 hours during the approved support operational hours will forfeit all support for the day.

26. Units that encounter situations where contractor support (i.e., automated targets, PITS targets, battlefield effects simulators, etc.) is delayed or interrupted by circumstances beyond the control of the requesting unit (i.e., RMB directed check fire, ASP support, MEDEVAC, etc.) must contact RMB/TSCQ in order to arrange continued support within the scope of the contract and available assets.

27. If battle effect simulators are to be used on this range, the OIC and RSO will be trained on the systems in addition to the operator.

PRIMARY DIRECTION OF FIRE: North-Northeast

APPLICABLE MAP SHEET: All grid coordinates listed in this order apply to the Quantico Military Installation Map V834S Edition 5-NGA 1:25000.

FACILITIES

Towers: 0

Bleachers: 0

Sheds: 0

Ammo Breakdown table: 1 per 200, 300, 500 yard lines

Parking: Shooter parking lot is adjacent to MCB-4

UTILITIES AVAILABLE:

Electricity: None

Lights: None

Water System: None

INSTALLED COMMUNICATIONS: Yes

<u>Nearest MEDEVAC Landing</u>	<u>MILES</u>	<u>LOCATION</u>
<u>Zones (LZ)</u>	1/4	8820067600 (Range 4)
LZ-9		

Directions: Exit Range 3, turn left. Go approx 150m to Range 4. LZ located between Garand Road and 700 yd line on right.

LASERS AUTHORIZED: Class 1 - 3R. Standard aiming devices mounted on approved service rifles. Class 3B can be fired if safety screw is installed preventing high power output.

COMMUNICATION REQUIREMENTS:

1. A radio check is required immediately upon occupying any portion of the RTA, every 30 minutes in a live fire status and every 3 hours in a non-live fire status.

2. The Range Control Facility (RCF) Fire Desk Net Control call sign is "Range Control". Your call sign is "Range XX" (name of range, training area or facility unit is occupying).

3. The primary RCF Fire Desk Net Control frequencies are: ELMR talk group "RC Safety" (ground) and 323.7 AM UHF (air).
4. The secondary RCF Fire Desk Net Control is telephone, numbers: 703-784-5321 or 5322.
5. OIC/RSO will monitor the RCF primary and secondary Safety Nets at all times. Instant communication is required.
6. Any unit with organic ELMR radios will have their ELMR radios programmed with the "RC Safety" talk group and use those radios as their primary means of communication within the RTA.
7. Units without organic ELMR assets will be issued ELMR radios from RMB upon check-in.
8. Approved Non-ELMR radios are only authorized for internal communication (ground).
9. If the RCF cannot reach a unit within the RTA via primary communication, the unit will be contacted via the secondary means of communication.
10. Upon loss of primary communication the OIC/RSO will initiate a "check fire"/cease training status and will contact the RCF via secondary communication. This communication will be maintained while primary communication is being restored. Units may only resume firing/training once primary communication has been re-established and clearance is granted by the RCF.

INJURY CLASSIFICATIONS:

Injuries are classified into the following categories in order to aid in casualty evacuation from the RTA.

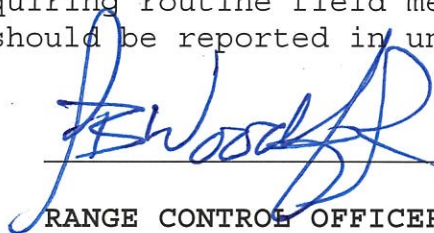
1. ROUTINE. Routine injuries are those injuries that are not threatening to life, limb or eyesight; and conditions or illnesses treatable by medication or procedures available at the base medical facilities.
2. PRIORITY. Priority injuries are those injuries that require immediate medical attention but are not threatening to life, limb, or eyesight if treated promptly.
3. URGENT. Urgent injuries are severe injuries that are threatening to life, limb, or eyesight and require immediate medical attention.

4. MASS CASUALTY. A mass casualty is a series of injuries with multiple priority and urgent medical patients.

MEDICAL EVACUATION (MEDEVAC) PROCEDURES:

1. Injury occurs.
2. Range immediately ceases-fire.
3. OIC notifies S-3/OOD of injury.
4. S-3/OOD dispatches corpsman.
5. Medical support evaluates/treats injured personnel.
6. Range OIC notifies Range Control of the injury, stating briefly what happened, the extent of the injury and what type of MEDEVAC transportation needed (ground/air).
7. Maintain constant radio contact with Range Control and await further instructions.

*Minor injuries and illnesses requiring routine field medical services need not be reported to RMB but should be reported in unit training logs.



RANGE CONTROL OFFICER

DATE: 30 APR 2021